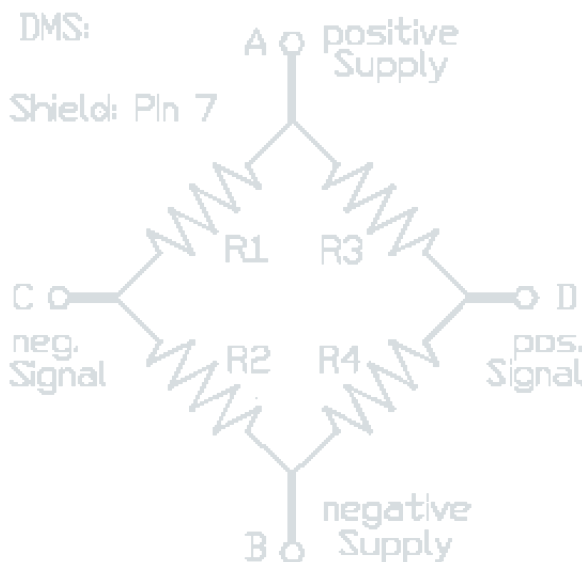




## Strain Gauge / Volt / ICP System



- 16 bit resolution
- sampling rates up to 500 kHz
- external sync
- RPM input
- Analog, Digital, Strain Gauge, and ICP inputs
- galvanic isolation
- automatic auto zero
  
- bridge integration (internal)
- patented data communication
- DLL-Interface
- LTTview software included
- 9-36 VDC internal
  
- 100-240 VAC 50/60 Hz
- Front end with 8 or 16 Channels
- 19" Rack module conform IP54, 16 or 32 Channels per Rack
- Possible up to 4096 Channels



# LTT SensorCorder Hardware

## The LTT SensorCorder

is a mobile measurement system with 8 or 16 galvanic separated Strain Gauge, Volt und ICP inputs, which are adjustable – it depends of the sensor – with the software LTT view. Measurement resolution is 16 bits .

The maximum sampel rate is 500 KHz per channel. The galvanic isolation works in the frequency range of 0 to 50 kHz.

Automatic auto zero, analog and digital input filters, internal shunt calibration, quarter, half and fullbridge connection and a AC / DC-coupling complete the system.

The internal memory is upgradable from 4 MS per channel up to 16 MS per channel.

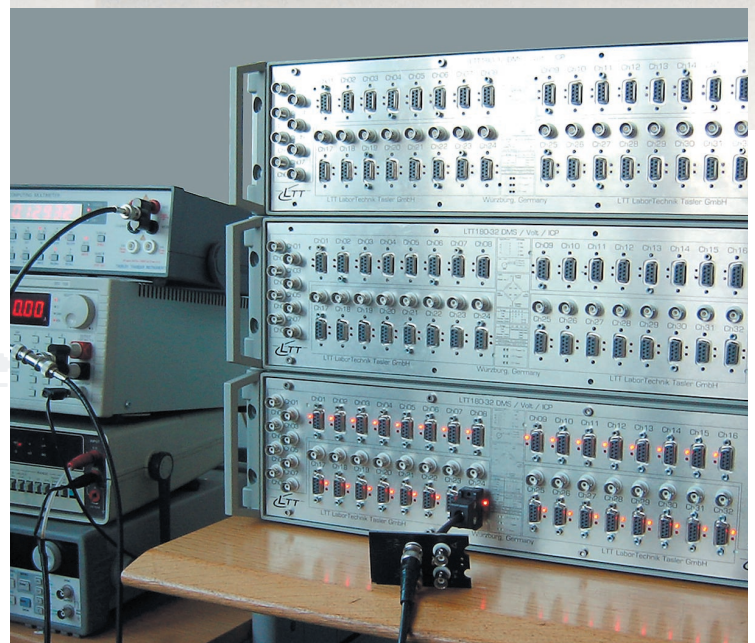
The system was developed especially for ultrafast long- and short time measurements. The system is connected with eitherethernet (1000/100/10 BaseT), WLAN, SCSI, USB or FireWire to a PC.

Using the DLL you can integrate other applications, for example FAMOS, LabView, DIAdem, MATLAB, Mgraph.

## The LTT SensorCorder

is customizable for your needs The system is available

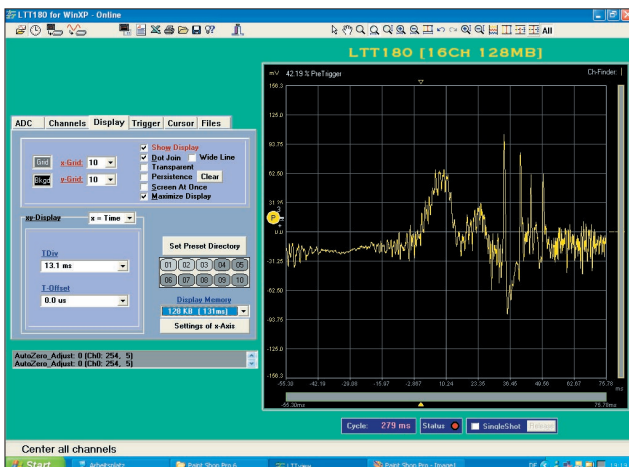
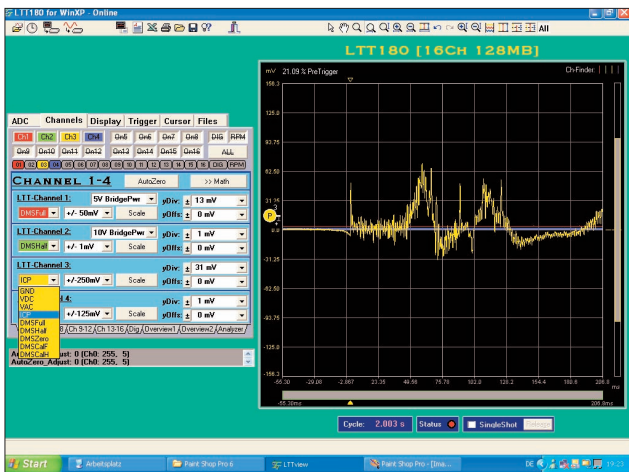
- as compact black box with 8 or 16 channels, units are cascadable up to 4096 channels!
- An internal HDD (40 GB, optional), allows for PC independent operation.
- as 19" Rack in silverdesign (per rack 32 channels),



**for higher signal bandwidth**

is it possible to use the approved transientrecorders LTT-184 and LTT-186 with a sample rate up to 20 MHz. Please ask for more information or take a look on our website [www.tasler.de](http://www.tasler.de)

# LTT SensorCorder Software / Technical Data



Comfortable handling with LTTview

Model	LTT SensorCorder	LTT SensorCorder Silver (19" Rack)	
Channels:	16 galvanic isolation	32 galvanic isolation	
AD-converter:	16, individual & simultaneous	32 Stück, individual & simultaneous	
Stand-Alone:	optional up to 40 GB	optional (depends of the concept)	
RAM:	128 MB (512 MB optional)	128 MB (512 MB optional)	
External Frequency / RPM:	yes / yes	yes / yes	
<b>3 Preamplifiers</b>			
Input-type	Strain-Gauge	<b>Volt</b>	<b>ICP</b>
Input coupling	DC	AC/DC, 1M $\Omega$ , 15 pF	AC
Measurement range	1 mV bis 500 mV	100 mV bis 50 V	100 mV bis 10 V
Offset drift	$\pm 500\%$ of the measurement range	$\pm 500\%$ of the measurement range	$\pm 500\%$ of the measurement range
Sample-rate	<b>31 Hz (16 Bit) bis 500 KHz (16 Bit)</b>		
DC-isolation	galvanic-isolation at 0 – 50 KHz up to $\pm 200$ V		
Protection	$\pm 100$ V		
Signal bandwidth	50 KHz (-3 dB)		
Crosstalk	< accuracy of measurement		
Clock	Intern, extern		
Digital input	16 Bit, TTL		
CMMR	92 dB		
Inputs	bridge integration-internal full-, half-and quater-bridge connection	-	-
Resistors	120 $\Omega$ & 350 $\Omega$	-	-
Autozero	automatic $\pm 500\%$	-	-
Source	1 – 10 V	-	5 mA
Analog Input Filter	8 pol filter: 50 KHz		
Digital Filter	online adjustable (Bessel, Butterworth, Chebychew)		
SNR	> 72 dB accuracy (DC)		
<b>Operation Conditions</b>			
Source	9 – 36 VDC / 100 – 240 VAC, 80 to 120 W		
PC-connection	SCSI-II-Interface, 8 Bit, 20 MHz ULTRA or IEEE1394 400 MBit/s		

## LTT References

ABB AG • Audi AG • BMW AG • Robert Bosch GmbH • Bosch Engineering • Conti-Teves AG • DaimlerChrysler AG • Deutsche Bundeswehr • EADS Deutschland GmbH • Linde AG • Maschinenfabrik Reinhausen GmbH • Racal Instruments France • Recording Systems Ltd. • Siemens AG • Siemens VDO Automotive AG • Siemens AG – Power Generation • Toyo Corporation Japan • TU München • UG Electronics Oy Finland • Volkswagen AG

### Fields of operation

#### Production and Test

- product control
- test systems for airbags
- measurement systems for motor control systems
- quality control and optimization of production processes
- turbine test stands

#### Research and Development

- measurements in research institutes and universities
- fracture research and modal analysis in static construction
- applications in biomedicine and neuromedicine

#### Mobile measurement

- long duration measurements and studies in the automotive industry
- service operations and on-site appl.
- mobile laboratory measurements
- crash-tests



### About LTT

LTT is a leading manufacturer of measurement systems located in Würzburg, Germany. The technology is based on a patented data interface which allows extremely fast transfer rates from the measurement device to an internal hard disk or PC. LTT cooperates with selected distribution partners worldwide to ensure the best local service for its products.

### Interested?

Are you interested in further details about LTT products? Please visit our website or call us [www.tasler.de](http://www.tasler.de)  
Our sales team will be glad to talk to you.

#### LTT Labortechnik Tasler GmbH

Friedrich-Bergius-Ring 15  
97076 Würzburg  
Tel: +49 (0)931 / 3 59 61-0  
Fax: +49 (0)931 / 3 59 61-50  
... oder per email: [info@tasler.de](mailto:info@tasler.de)



Informationen über:



[www.instrumentation.it](http://www.instrumentation.it)

Via Acquanera 29, 22100 COMO (Italy) tel. +39.031.525391 - fax +39.031.507984 - [info@instrumentation.it](mailto:info@instrumentation.it)

**INSTRUMENTATION DEVICES SRL**