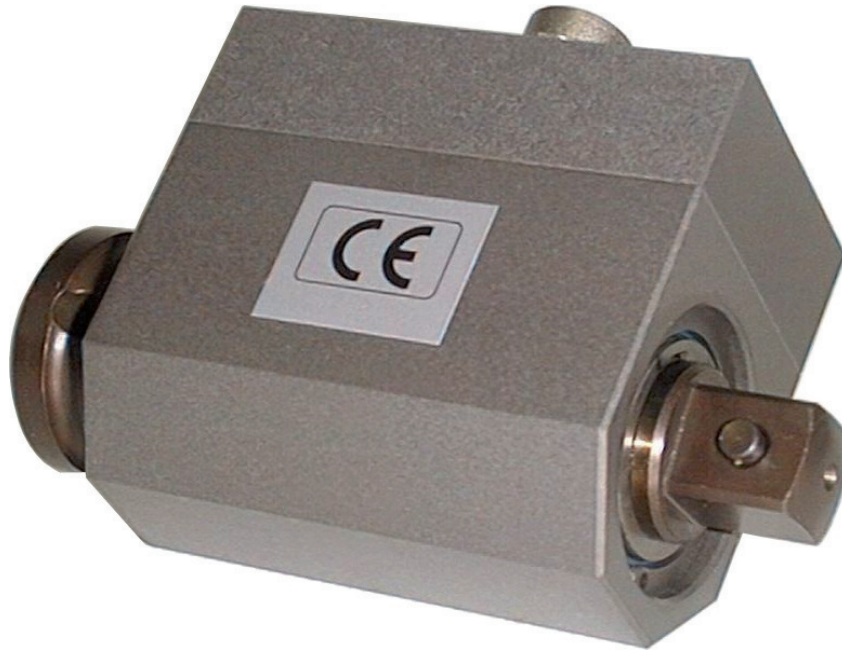




Torque Transducer

Typ DRFN

with square drive



**for automobile manufacturing, test bench and assembly applications,
suitable for pulsed tools**

It distinguishes with the following special features:

- No service needed because of contactless data acquisition
- High interference rejection because of amplified active signal
- Frequency modulation and strain gage principle cause high accuracy
- Ordinary power supply
- optional angle detection

Technical Specifications:

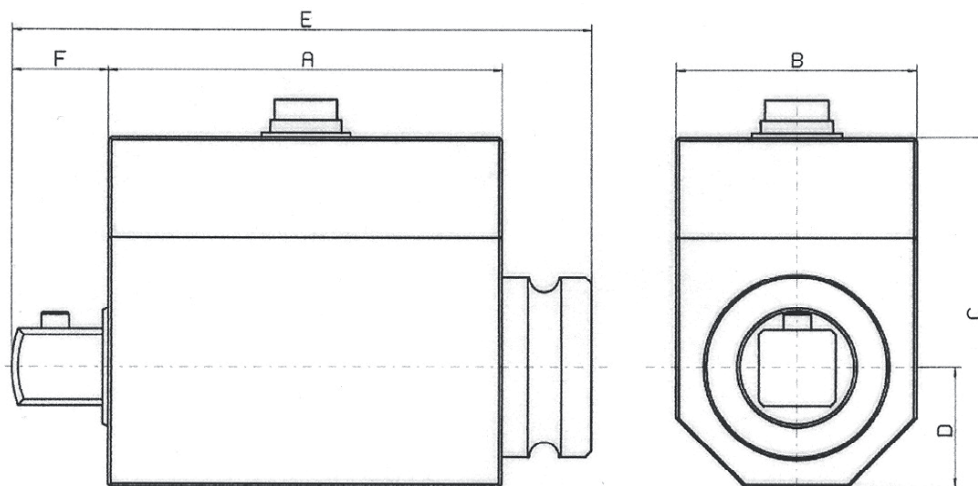
Supply Voltage:	12V DC $\pm 10\%$
Current Consumption:	< 200mA
Rise Time 10-90%:	1ms (1kHz)
Voltage Output:	0- ± 5 V
Internal Resistance:	100 Ω
Ripple:	< 100mVss
Nonlinearity:	< 0,15%
Hysteresis:	< 0,1%
Operating Temperature:	0-60°C
Compensated Temperature Range:	5-45°C
Temperature fault	
Zero Point	0,02%/K
Sensitivity:	0,01%/K
Connection:	12 Pin Fitted Connector

Angle	option(w)
rev. max.:	3 000 rpm
Output:	open collector
internal pull up:	10k Ω (5V level)
external pull up:	24V max
I max:	20mA
Pulses/rev.:	360
Resolution:	1°

Direction detection:

90° phase shift
Ch. A preceding at right spin of propulsion side

Mechanical Dimensions:



Inner- and outer square DIN 3121 (ISO- Norm 1174 : 1975)

Type [Zoll]	n _{max} [rpm]	Measurement range [Nm]	Overload [%]	A [mm]	B [mm]	C [mm]	D [mm]	E [mm]	F [mm]	Weight approx. [g]
¼"	12.000	1 / 2 / 5 / 10 / 12	100	62	32	56	16	77	8	300
		15	70							
		20	30							
¾"	12.000	20 / 30 / 50	100	62	24	52	16	82	12	350
		63	80							
½"	12.000	100	100	66	40	57	20	95	16	480
		160	60							
		200	30							
¾"	12.000	200 / 300	100	66	46	65	23	110	24	800
		500	50							
1"	12.000	1.000	50	66	52	71	23	127	31	1.250
		2.000	30							
1½"	7.000	2.000 / 3.000	100	86	92	108	46	178	44	4.800
		4.000 / 5.000	50							
¼"-w	12.000	0,5 / 1 / 2 / 5	100	66	32	51	16	82	9	250
		10	80							
		12	50							
		15 / 20	30							
¾"-w	12.000	20 / 30 / 50	100	66	40	59	20	90	12	400
		63	80							
½"-w	12.000	100	100	66	40	59	20	97	16	480
		160	60							
		200	30							
¾"-w	11.500	200 / 300	100	71	55	74	27,5	117	24	1.050
		500	50							
1"-w	11.500	1.000	50	72	56	73	28	132	30,5	1.250
1½"-w	7.000	2.000 / 3.000	100	86	92	108	46	178	44	4.800
		4.000 / 5.000	50							

1. Ordering Example: DRFN 1000 1"-w

Torque-transducer (standard square) measuring range 1000 Nm with angle detection

available Accessories: Measuring cable, Supply and Display Units

ETH messtechnik gmbh Hagstrasse 10 D-74417 Gschwend Tel.: +49(0)7972-9310-0 Fax: -50 www.eth-messtechnik.de info@eth-messtechnik.de

Technical changes reserved

2. Ordering Example: DRFN 1000- 1"-A

Torque-transducer (standard square) measuring range 1000 Nm

Caution: For use with evaluation devices GMV1; GM1002; GM1003 order without Index „A“!



www.instrumentation.it

Via Acquanera 29, 22100 COMO (Italy) tel. +39.031.525391 - fax +39.031.507984 - info@instrumentation.it

INSTRUMENTATION DEVICES SRL