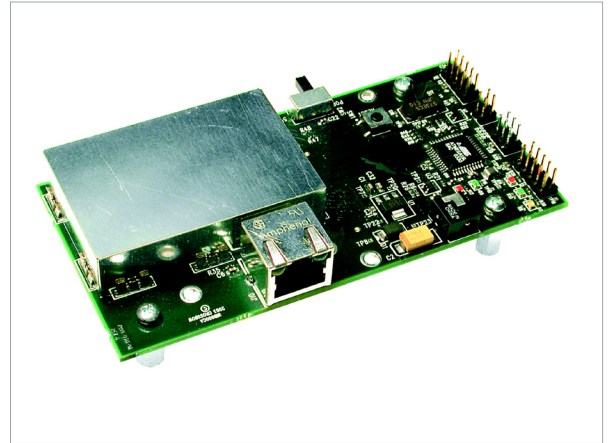


MIB600

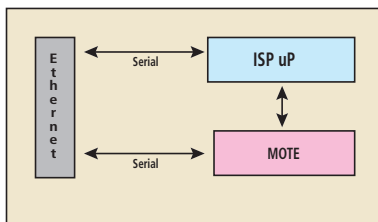
ETHERNET INTERFACE BOARD



- Base Station/Ethernet Gateway for Wireless Sensor Networks
- Mote Network Testbed
- Remote In-System Programming for IRIS/MICAz/MICA2 Processor/Radio Boards
- Full TCP/IP Protocol
- Power Over Ethernet (POE) Ready

Applications

- Ethernet Network Interface
- Testbed Deployments
- In-System Programming
- Network Connectivity via TCP/IP



MIB600CA Block Diagram
MIB600 Block Diagram

MIB600

The MIB600 provides Ethernet (10/100 Base-T) connectivity to the IRIS/MICAz/MICA2 family of motes for communication and in-system programming. The MIB600 allows remote access to sensor network data via TCP/IP. The MIB600 serial server connects directly to a 10 Base-T LAN like any other network device. The MIB600 can bridge “wired” and “wireless” segments of a network. The MIB600 is also an effective conduit for sensor data.

The MIB600 offers two separate ports: One dedicated to in-system Mote programming and a second for routine data communication over the LAN. The built-in Power Over Ethernet (POE) feature eliminates the need for an external power source, simplifying installation and maintenance.

Specifications

Ethernet Network Interface

- RJ-45
- 100 Base
- IEEE 802.3 / IEEE 802.3af POE mid-span PSE compatible
- ARP, UDP/IP, TCP/IP, Telnet, DHCP, BOOTP, TFTP, Auto IP, and HTTP
- Indicators: 10 Base-T & 100 Base-TX

LAN Interface

- Internal web server, serial login, telnet login
- Security: password protection, locking features

Mote Interface

- Connector: 51-pin expansion
- Interface: UART
- 9.6-115.2 k baud
- Mote LEDs - red, green, yellow, power OK
- Management: dedicated TCP/IP port for mote UART

In-system Programming

- Protocol: UISP
- ISP active LED
- Dedicated TCP/IP port for InSystem programming
- Remote Mote RESET

Physical And Environmental

- Size: (L x W x H)
4.63" x 2.29" x 1"
11.76cm x 5.82cm x 2.54cm
- IEEE 802.3af POE 5V/082
- Shipped with external power supply

Ordering Information

Model	Description
MIB600	Ethernet PC Interface Board

Document Part Number: 6020-0055-05 Rev A

Questi prodotti sono distribuiti e supportati in Italia da:



Instrumentation Devices Srl

Via Acquanera 29 - 22100 COMO (Italy)
ph +39 031 525 391- fax +39 031 507 984
info@instrumentation.it - www.instrumentation.it