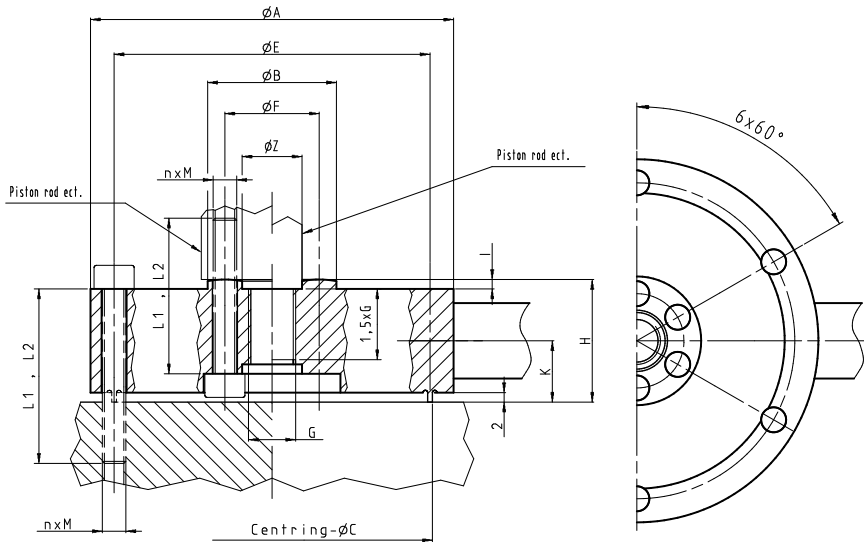




Force Transducer K

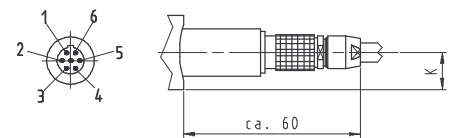
Dimensions Nominal Capacity 5 kN



Nominal capacity	F_{nom}	± kN	5
Outer diameter	Ø A	mm	77 - 0.1
Flange diameter	Ø B	mm	27.3
Outer centring diameter	Ø C	mm	68 - 0.05
Outer pitch circle diameter	Ø E	mm	67 ± 0.1
Centring pin diameter	Ø Z	mm	12.7 + 0.05
Overall height	H	mm	26 - 0.1
	I	mm	2
Height of cable entry	K	mm	13
n × thread			6 × M5
Inner pitch circle diameter	Ø F	mm	20 ± 0.1
Thread adapter internal thread	Ø G		M10 × 1
Stretch bolt quality			8.8
static load	L_2	mm	35
dynamic load	L_1	mm	35
Bolt torque (stretch bolts) (oiled, $\mu = 0.12$)		N·m	3
Permissible dynamic load range ¹⁾	$2 \cdot F_a$		$1.6 \cdot F_{nom}$
electr. connection	Cable connected to transducer (5 m, PUR, 6 wire, screened. Ø 6.5 mm, open ended)		

Plug connection (LEMO)

View from pin side



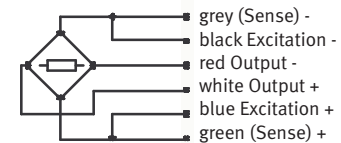
LEMOS, EGG.1B.307.CLL

- 1 Output +
- 2 Excitation -
- 3 Excitation +
- 4 Output -
- 5 Sense +
- 6 Sense -

Screen connected to sensor body

Corresponding plug:

FGG.1B.307.CLA.D72



1) bei Wechselbeanspruchung nach DIN 50100, jedoch nicht größer als $\pm F_{nom}$

Specifications subject to change without notice
all details describe our products in general form
they are not to be understood as expressed warranty
and do not constitute any liability whatsoever



Gassmann Testing and Metrology GmbH

Philipp-Reis-Straße 6, 64404 Bickenbach, Germany
www.gtm-gmbh.com

Tel. +49(0)6257-9720-0, Fax +49(0)6257-9720-77
contact@gtm-gmbh.com