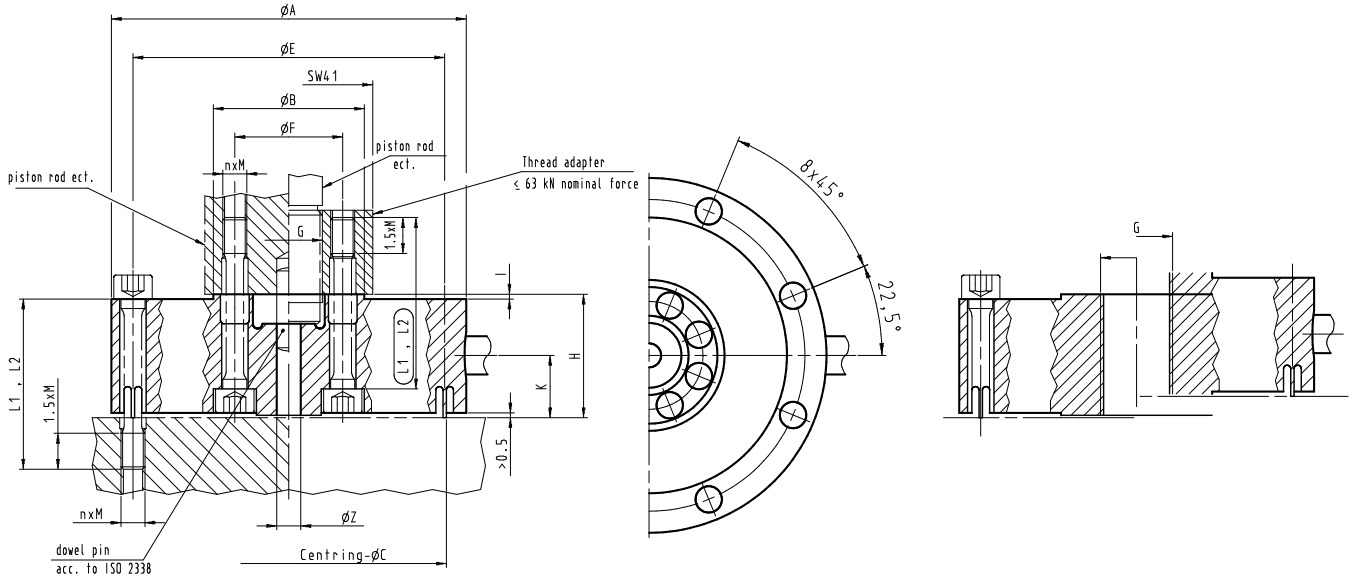




Force Transducer K

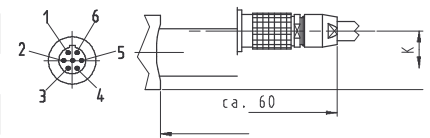
Dimensions Nominal Capacity 10 kN - 160 kN



Nominal capacity	F_{nom}	± kN	10, 20	25	50, 63	100, 150, 160
Outer diameter	$\varnothing A$	mm	95 - 0.1		101 - 0.1	148 - 0.1
Flange diameter	$\varnothing B$	mm	40 - 0.1		38.6 - 0.1	63
Outer centring diameter	$\varnothing C$	mm	81 - 0.1		87.5 - 0.1	131.4 - 0.1
Outer pitch circle diameter	$\varnothing E$	mm	80 ± 0.1		86 ± 0.1	130 ± 0.1
Centring pin diameter	$\varnothing Z$	mm		8 + 0.1		10 + 0.1
Overall height	H	mm		31 - 0.1		49 - 0.1
	l	mm	1		1.5	0.5
Height of cable entry	K	mm		18		25
n × thread				8 × M6		8 × M10
Inner pitch circle diameter	$\varnothing F$	mm		30 ± 0.1		45 ± 0.1
Thread adapter internal thread	$\varnothing G$		M20 × 1.5			-
Stretch bolt quality					10.9	
static load	L_2	mm		45		70
dynamic load	L_1	mm		55		100
Bolt torque (stretch bolts) (oiled, $\mu = 0.12$)		N·m		12		65
Permissible dynamic load range ¹⁾	$2 \cdot F_a$			$1.6 \cdot F_{nom}$		²⁾

Plug connection (LEMO)

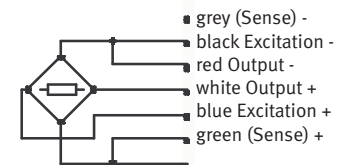
View from pin side



LEMOS, EGG.1B.307.CLL

- 1 Output +
- 2 Excitation -
- 3 Excitation +
- 4 Output -
- 5 Sense +
- 6 Sense -

Screen connected to sensor body
Corresponding plug:
FGG.1B.307.CLA.D72



electr. connection

Cable connected to transducer (5 m, PUR, 6 wire, screened, \varnothing 6.5 mm, open ended)

1) with alternating load acc. to DIN 50100, not exceeding $\pm F_{nom}$
2) $1.6 \cdot F_{nom}$ (Version 1 mV/V), $1.0 \cdot F_{nom}$ (Version 2 mV/V)

Specifications subject to change without notice
all details describe our products in general form
they are not to be understood as expressed warranty
and do not constitute any liability whatsoever



Gassmann Testing and Metrology GmbH

Philipp-Reis-Straße 6, 64404 Bickenbach, Germany
www.gtm-gmbh.com

Tel. +49(0)6257-9720-0, Fax +49(0)6257-9720-77
contact@gtm-gmbh.com