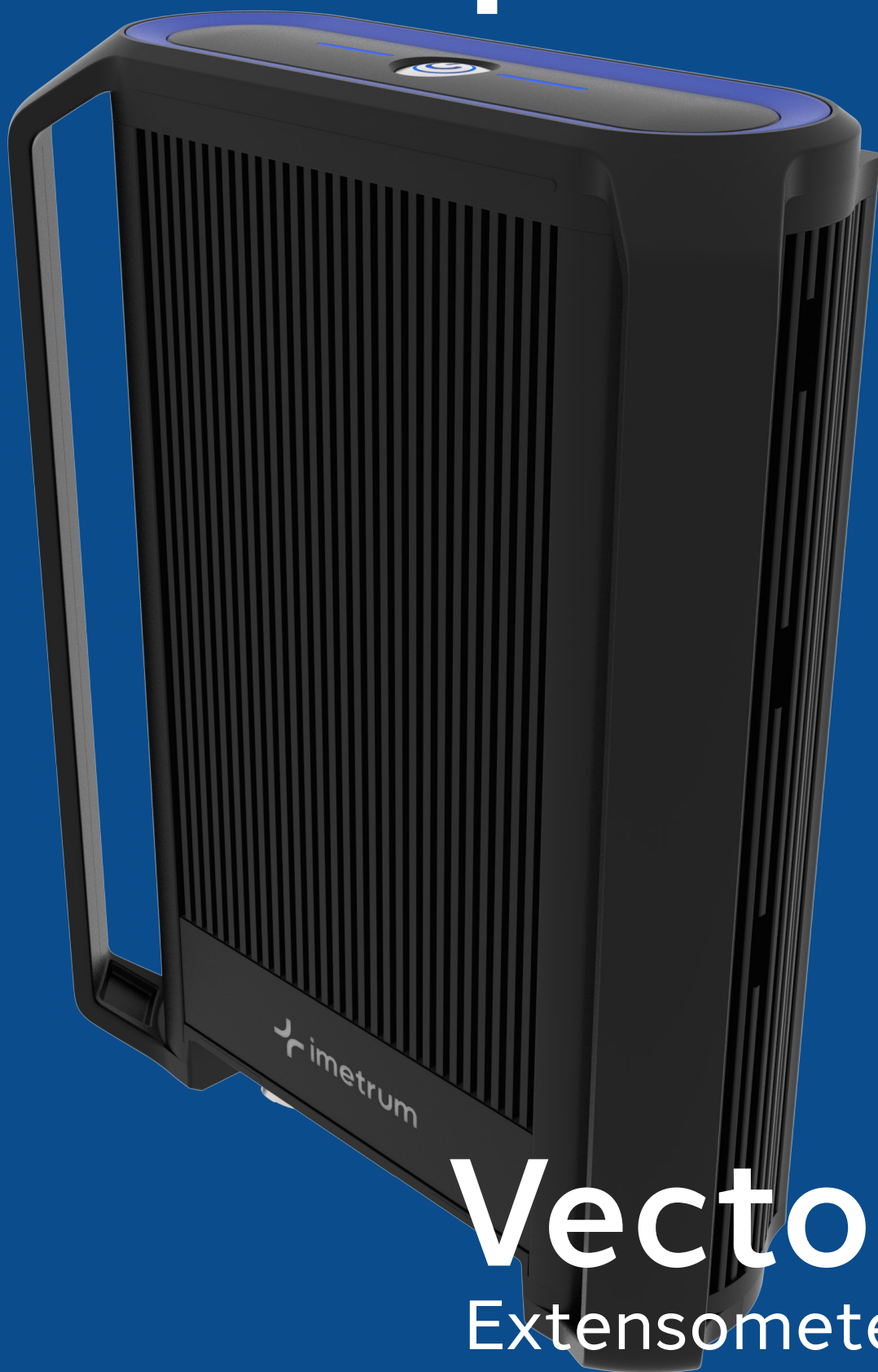


 imetrum



Vector Extensometer

**Instrumentation
Devices** 

imetrum.com
Instrumentation Devices Srl
Via Acquanera 29 - 22100 COMO (Italy)
ph +39 031 525 391- fax +39 031 507 984
info@instrumentation.it - www.instrumentation.it

Vector Extensometer

Vector is a new concept in strain and extension measurement.

It is a self-contained extensometer, capable of replacing multiple sensors with a single, industry specific instrument.

Using adaptive AI to implement decades of knowledge, paired with state-of-the-art hardware, Vector reduces throughput times whilst improving measurement accuracy and consistency.



Accurate

ISO 9513 Class 0.5
ASTM E83 Class B-1



Automated

AI driven specimen
detection



Flexible

Wide range of
specimen types



Intuitive

Easy-to-use
measurement

Exceptional design

Vector reduces the challenges of traditional extensometers by using non-contact, high accuracy three-dimensional measurement techniques:

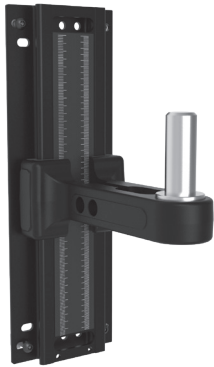
- Increases testing efficiency by reducing handling operations;
- Measures strain through failure;
- Operates in harsh environments and temperature chambers with no loss of functionality;
- Tests highly fragile specimens without impacting them;
- Enables rapid specimen throughput as well as easy integration to automation systems.

Simple, reliable operation

- Intuitive features such as laser alignment guides, status indicator lights and a flexible operating distance all help the operator during setup and use.
 - Easy to understand feedback from both the Vector software interface and Vector itself, provides immediate confirmation of the state of the Module.
 - A range of automation features such as specimen and gauge length detection, simplify the operator interaction and improve test reliability.
 - Vector is pre-configured with a large working volume so extensometer setup changes are reduced when alternating between different specimens, grips or test types.
 - Onboard adaptive processing enables truly zero touch operation with dynamic response to varying specimen size, appearance and behaviour.
 - Automatic and seamless access to the built-in validation mode provides immediate confidence that Vector is behaving as expected and providing accurate results.
-

Accessories

A Marking Kit is included with stamps, stencils and inks for a range of different specimens.



UTM Interface

Suitable for mounting to UTM T-slots.



Extension Arm

Suitable for larger test frames or use with temperature chambers.



Split Collar Clamps

For mounting Vector to UTMs fitted with cylindrical columns.



Base Plate Adapters

To allow Vector to be fitted to UTMs without T-slots or cylindrical columns.

Imetrum Limited
The Courtyard, Wraxall Hill,
Wraxall, Bristol UK,
BS48 1NA
+44 (0) 1275 464 443
hello@imetrum.com



Follow us for news & updates:



PB1115



Instrumentation Devices Srl
Via Acquanera 29 - 22100 COMO (Italy)
ph +39 031 525 391- fax +39 031 507 984
info@instrumentation.it - www.instrumentation.it